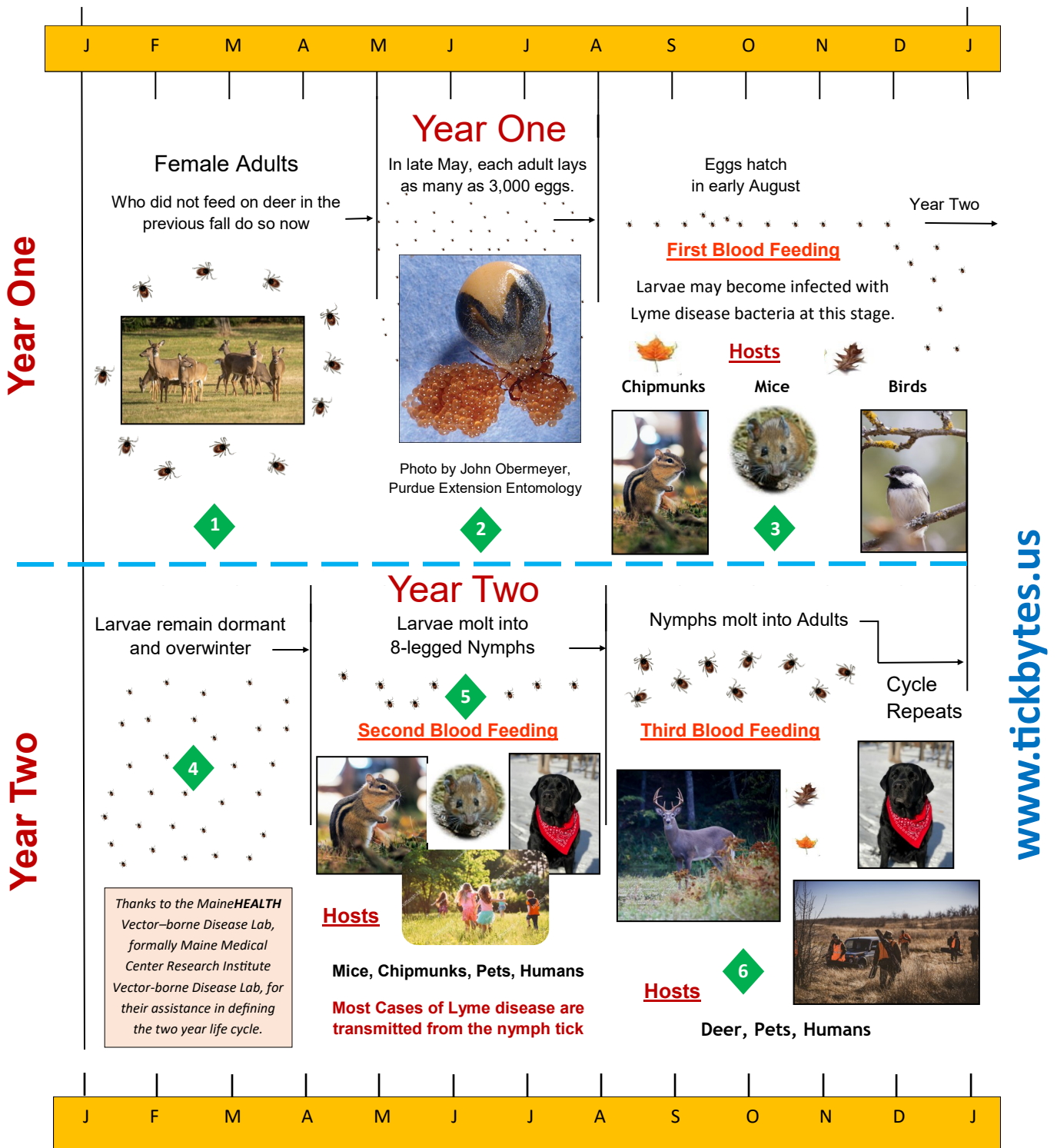


# Two Year Life Cycle of the Deer Tick



1. Female adults who failed to feed in the fall do so now.
2. In late May, adult female ticks lay as many as 3,000 eggs.
3. Eggs hatch in early August into 6-legged larvae - **First Blood Feeding** - may become infected by disease agents at this feeding.
4. Larvae remain dormant and overwinter until the spring.
5. Larvae molt into 8-legged nymphs - **Second Blood Feeding** - Most cases of Lyme disease transmitted by nymphs.
6. Nymphs molt into adults - **Third Blood Feeding** - Adults have 2X the infection rate of nymphs.

